

MONTHLY MEMBERSHIP PROGRESS REPORT

LOCATION INDIA

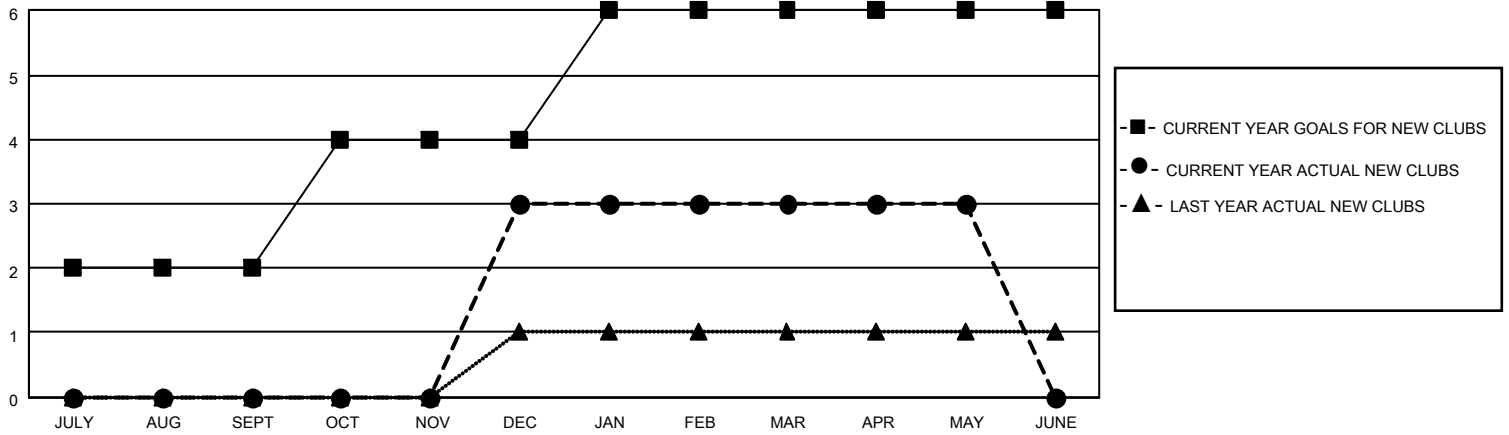
District 322C5

Results as of: 5/31/2021

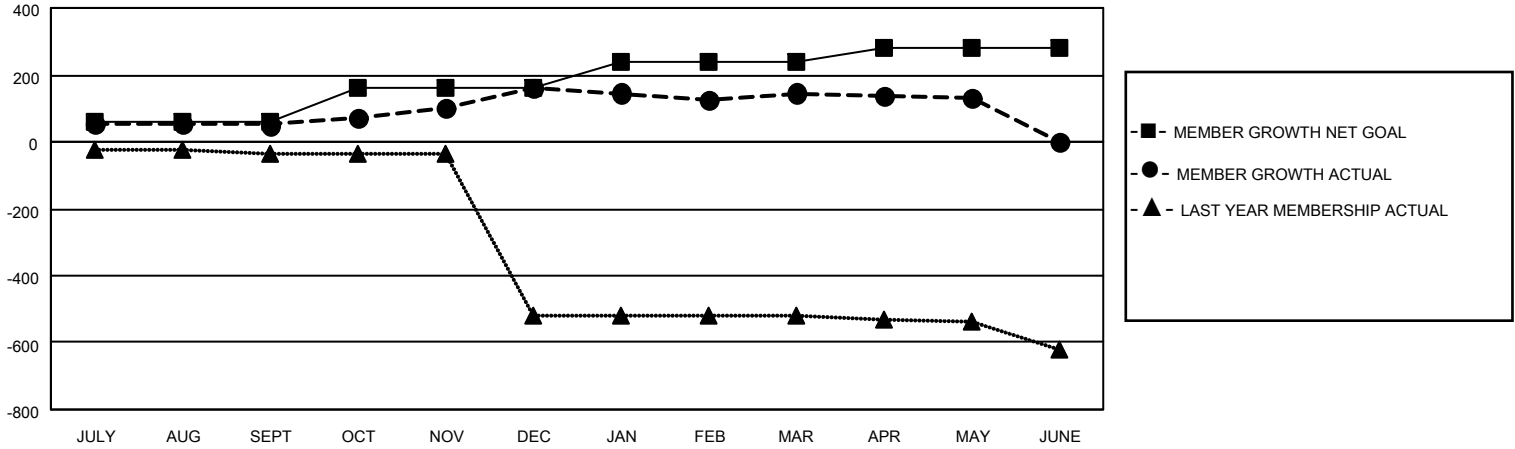
Clubs			
RESULTS FOR 2020-2021			
QUARTER	NEW CLUB GOAL	NEW CLUBS	DROPPED CLUBS
JULY/AUG/SEPT	2	0	0
OCT/NOV/DEC	2	3	0
JAN/FEB/MAR	2	0	1
APR/MAY/JUNE	0	0	0

Members			
RESULTS FOR 2020-2021			
QUARTER	MEMBER GROWTH NET GOAL	MEMBER GROWTH ACTUAL	DROPPED MEMBERS ACTUAL (including transfers)
JULY/AUG/SEPT	60	92	16
OCT/NOV/DEC	100	226	95
JAN/FEB/MAR	80	50	60
APR/MAY/JUNE	40	12	21

GOALS AND ACTUAL NEW CLUBS CUMULATIVE



GOALS AND ACTUAL MEMBERS CUMULATIVE



DROPPED CLUBS: 1

31 CLUBS OF 51 ADDED 1 OR MORE NEW MEMBERS

<u>GENDER DISTRIBUTION</u>	
MALE	936 (59.96%)
FEMALE	625 (40.04%)

<u>DROPPED MEMBERS</u>	
DECEASED	14
CLUB CANCELLED	16
OTHER	162
TOTAL	192

[CLICK HERE FOR CUMULATIVE MEMBERSHIP DATA](#)

TOTAL FAMILY UNIT MEMBERS	915
FAMILY MEMBERS PAYING HALF DUES	553